

A NEW JOB

For Participants of the NDIS

Cadbury Merchandiser Job in Ritchies Stores

(East Bentleigh or Mount Waverley)

Hearth's unique approach to Open Employment includes:

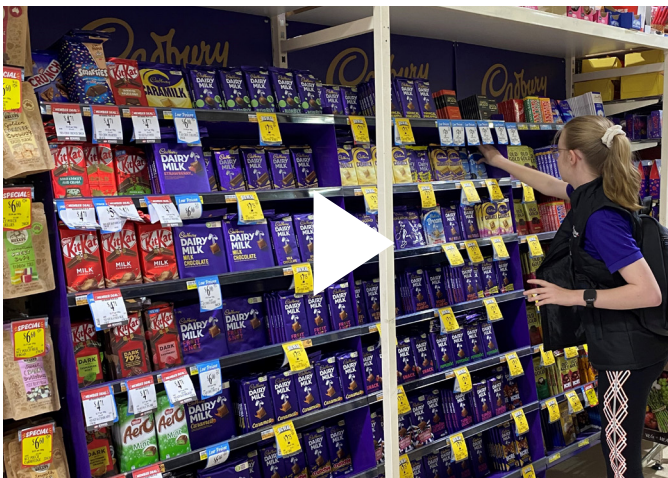
1. Starting with clearly defined goals by undertaking the Hearth 'MY Pathway' process - being clear about what you want to achieve, how and why.
2. Matching each participant's skills, passions and motivations to each job.
3. Modifying the job (if required) while building capacity over time.
4. Matching Hearth support workers to ensure your personally defined goals are realised.
5. Supporting participants in the job process, while building job-search skills.

How to apply:

Send an expression of interest to
info@hearthaustralia.com.au



Employed by Cadbury (Mondelez)
and working in Ritchies Stores



Georgia's Story

Hearth started a pilot Open Employment Program with Cadbury in Bendigo. Georgia was our successful applicant and is thriving in her role as a Cadbury Merchandiser in IGA Supermarkets - supported by Hearth employment conditions.

Georgia's Story December 2023

[VIEW NOW](#)

Hearth introduced a fresh and innovative approach to disability services in 2017 informed by lived experienced. Several aspects of the "Hearth Approach" set Hearth apart from a more traditional provider, including:- The Relationship Manager role; The passion for Support Worker matching; The quality of the central support team; The Hearth Advisory Board; Our Sector Innovation agenda

If we can assist by providing support services, please click the following link to complete our service request form

[REQUEST FORM](#)